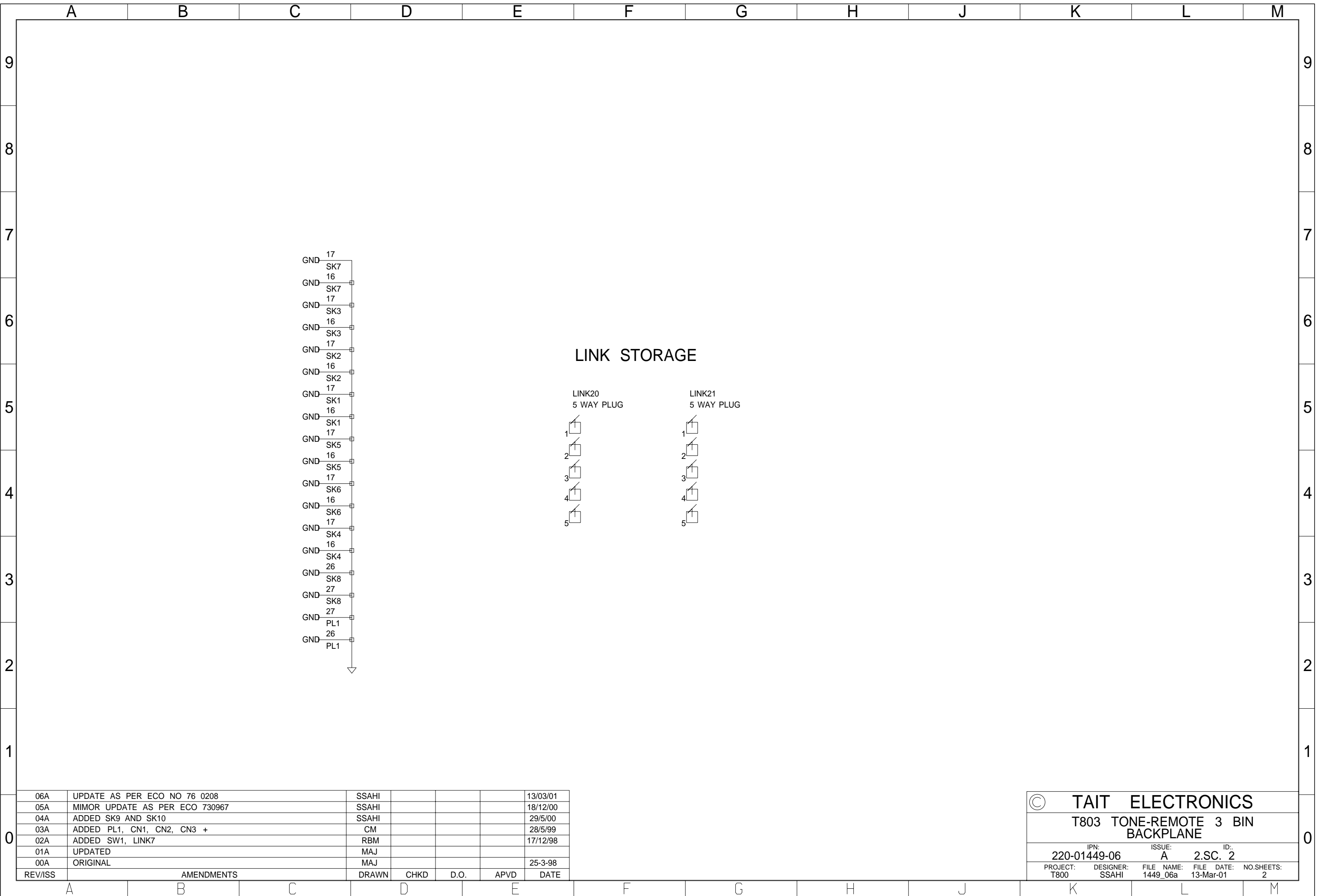


06A	UPDATE AS PER ECO NO 76 0208	SSAHI			13/03/01
05A	MINOR UPDATE AS PER ECO 730967	SSAHI			18/12/00
04A	ADDED SK9 AND SK10	SSAHI			29/5/00
03A	ADDED PL1, CN1, CN2, CN3 +	CM			28/5/99
02A	ADDED SW1, LINK7	RBM			17/12/98
01A	UPDATED	MAJ			
00A	ORIGINAL	MAJ			25-3-98
REV/ISS	AMENDMENTS	DRAWN	CHKD	D.O.	APVD DATE

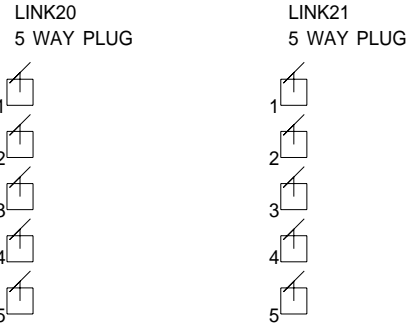
© TAIT ELECTRONICS  
T803 TONE-REMOTE 3 BIN BACKPLANE

IPN: 220-01449-06  
ISSUE: A  
ID: 2.S.C. 1

PROJECT: T800  
DESIGNER: SSAHI  
FILE NAME: 1449\_06a  
FILE DATE: 13-Mar-01  
NO.SHEETS: 2

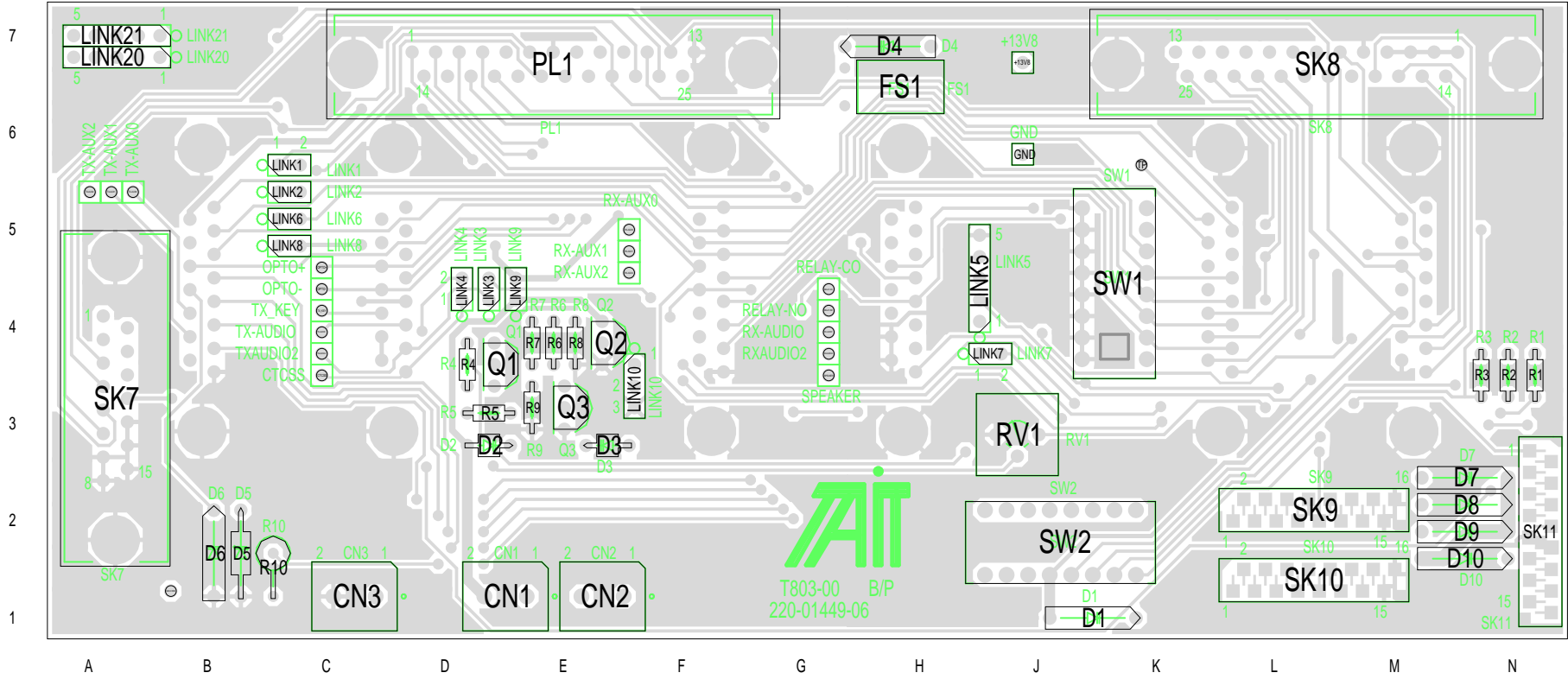


LINK STORAGE



REV/ISS	AMENDMENTS	DRAWN	CHKD	D.O.	APVD	DATE
06A	UPDATE AS PER ECO NO 76 0208	SSAHI				13/03/01
05A	MIMOR UPDATE AS PER ECO 730967	SSAHI				18/12/00
04A	ADDED SK9 AND SK10	SSAHI				29/5/00
03A	ADDED PL1, CN1, CN2, CN3 +	CM				28/5/99
02A	ADDED SW1, LINK7	RBM				17/12/98
01A	UPDATED	MAJ				
00A	ORIGINAL	MAJ				25-3-98

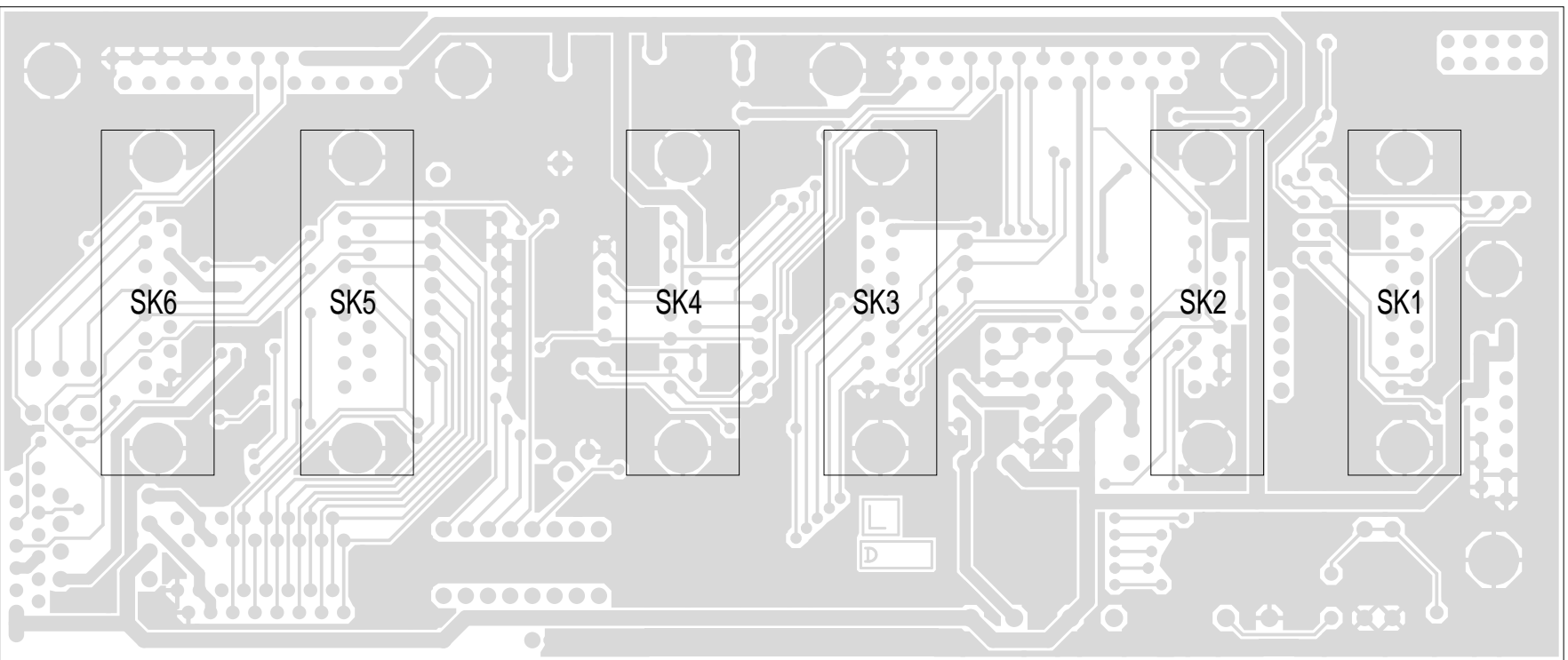
© TAIT ELECTRONICS					
T803 TONE-REMOTE 3 BIN BACKPLANE					
IPN: 220-01449-06		ISSUE: A		ID: 2.SC. 2	
PROJECT: T800	DESIGNER: SSAHI	FILE NAME: 1449_06a	FILE DATE: 13-Mar-01	NO.SHEETS: 2	



TAIT ELECTRONICS IPN: 220-01449-06 ISS: A 1.1A DATE: 13 Mar 2001

T803-00 B/P PCB LAYOUT - TOP SIDE

Scale: 1.3:1 ; Rotation: 270 degrees



7  
6  
5  
4  
3  
2  
1

N M L K J H G F E D C B A

TAIT ELECTRONICS  
T803-00 B/P PCB LAYOUT - BOTTOM SIDE

IPN: 220-01449-06  
ISS: A  
ID: 2.BA  
DATE: 13 Mar 2001

Scale: 1:3:1 : Rotation: 90 degrees

OEM PL1		OEM SK8 TONE REMOTE		SK9		SK10		SK11 LOCAL MONITOR	
PIN	FUNCTION	PIN	FUNCTION	PIN	FUNCTION	PIN	FUNCTION	PIN	FUNCTION
1	RX LINE 1	1	0V	1	CHANNEL SELECT 1	1	CHANNEL SELECT 1	1	SPEAKER
2	RX AUX 1	2	0V	2	CHANNEL SELECT 2	2	CHANNEL SELECT 2	2	
3	RX AUX 0	3	0V	3	CHANNEL SELECT 3	3	CHANNEL SELECT 3	3	
4	RX LINE 4	4	0V	4	CHANNEL SELECT 4	4	CHANNEL SELECT 4	4	
5	TX LINE 1	5	0V	5	CHANNEL SELECT 5	5	CHANNEL SELECT 5	5	TX AUDIO 1
6	TX AUX 0	6	RX AUDIO OUTPUT 1	6	CHANNEL SELECT 6	6	CHANNEL SELECT 6	6	RX AUDIO 1
7	0V	7	TX LINE 1-1	7	CHANNEL SELECT 7	7	CHANNEL SELECT 7	7	
8	TX LINE 4	8	TX LINE 4-1	8	CHANNEL SELECT 8	8	CHANNEL SELECT 8	8	RSSI
9	SIGNAL STRENGTH (RSSI)	9	13.8V	9	RX CTCSS DISABLE	9	RX CTCSS DISABLE	9	0V
10	SPEAKER	10	13.8V	10	SERIAL COMM	10	SERIAL COMM	10	0V
11	CTCSS 1 (TX TONE I/P)	11	13.8V	11	RX AUDIO OUTPUT	11	RX AUDIO OUTPUT	11	
12	REV PWR ALARM	12	13.8V	12		12		12	
13	0V	13	13.8V	13		13		13	
14	RX MUTE	14	TONE REMOTE ALARM 0	14		14		14	13.8V
15	TX KEY	15	TONE REMOTE ALARM 1	15		15		15	13.8V
16	RX RELAY COMMON	16	TONE REMOTE ALARM 2	16		16		16	13.8V
17	RX RELAY NORMALLY OPEN	17	TONE REMOTE ALARM 3						
18	RX INHIBIT	18	N/C						
19	TX AUX 1	19	RX MUTE 1						
20	TX OPTO KEY +	20	N/C						
21	TX OPTO KEY -	21	TX KEY 1						
22	FWD PWR ALARM	22	TONE REMOTE AUX 3						
23	REV PWR METER	23	TONE REMOTE AUX 2						
24	FWD PWR METER	24	TONE REMOTE AUX 1						
25	13.8.V (FUSED)	25	TONE REMOTE AUX 0						

SW2 isolates Tone Remote Module control lines:

SW2	SK8
RX AUDIO OUTPUT	RX AUDIO OUTPUT 1
TX LINE 1	TX LINE 1-1
TX LINE 4	TX LINE 4-1
RX MUTE	RX MUTE 1
TX KEY	TX KEY 1

- LN 1 :-FITTED : 1-2, for TX FITTED WITH A T1500-52, FORWARD POWER ALARM
- LN 2 :-FITTED : 1-2, for TX FITTED WITH A T1500-52, REVERSE POWER ALARM
- LN 3 :-FITTED : 1-2, for SERIAL COMM PROGRAMMING OF TX/EX THROUGH PIN 7 OF PRIMARY (RIGHT HAND) 'D' RANGE
- LN 4 :-FITTED : 1-2, for EXTERNAL CTCSS ENCODE OF TX/EX
- LN 5 :-FITTED : 1-2, for SELECTION OF RX AUDIO 1 TO TONE REMOTE  
: 2-3, for SELECTION OF RX LINE 1 TO TONE REMOTE  
: 3-4, NOT USED  
: 4-5, for EARTHING RX LINE 4  
USED IN CONJUNCTION WITH LN5:(2-3)
- LN 6 :-FITTED : 1-2, for TX CTCSS INHIBIT BY TONE REMOTE
- LN 7 :-FITTED : 1-2, for SERIAL COMM PROGRAMMING OF RX THROUGH PIN 7 OF PRIMARY (RIGHT HAND) 'D' RANGE
- LN 8 :-FITTED : 1-2, for TX FITTED WITH A T1500-52, TX ENABLE INPUT
- LN 9 :-FITTED : 1-2, for RX INHIBIT WHEN OPERATING SIMPLEX FREQUENCY
- LN 10 :-FITTED : 1-2, for FAN DRIVE WHEN TX IS KEYED  
: 2-3, for FAN DRIVE CONTINUOUSLY

SK1		SK2		SK3		SK4		SK5		SK6		SK7	
LEFT	TX/EX	RIGHT	TX/EX	LEFT	RX	RIGHT	RX	LEFT	REMOTE	RIGHT	REMOTE	PA	
PIN	FUNCTION	PIN	FUNCTION	PIN	FUNCTION	PIN	FUNCTION	PIN	FUNCTION	PIN	FUNCTION	PIN	FUNCTION
1	CHANNEL SELECT 1	1	TX LINE 1	1	CHANNEL SELECT 1	1	RX LINE 1	1	CHANNEL SELECT 1	1	TX LINE 4	1	13.8V
2	CHANNEL SELECT 2	2		2	CHANNEL SELECT 2	2		2	CHANNEL SELECT 2	2	CTCSS 1	2	13.8V
3	CHANNEL SELECT 3	3		3	CHANNEL SELECT 3	3		3	CHANNEL SELECT 3	3	RX AUDIO OUTPUT	3	FWD PWR ALARM
4	CHANNEL SELECT 4	4	TX LINE 4	4	CHANNEL SELECT 4	4	RX LINE 4	4	CHANNEL SELECT 4	4	TX LINE 1	4	REV PWR ALARM
5	CHANNEL SELECT 5	5	TX ENABLE	5	CHANNEL SELECT 5	5	SIGNAL STRENGTH (RSSI)	5	CHANNEL SELECT 5	5	SIGNAL STRENGTH (RSSI)	5	FWD PWR METER
6	CHANNEL SELECT 6	6	TX AUDIO 1	6	CHANNEL SELECT 6	6	RX AUDIO 1	6	CHANNEL SELECT 6	6	TONE REMOTE ALARM 1	6	REV PWR METER
7	CHANNEL SELECT 7	7	TX AUDIO 2	7	CHANNEL SELECT 7	7	RX AUDIO 2	7	CHANNEL SELECT 7	7	TONE REMOTE ALARM 2	7	0V
8	0V	8	CTCSS	8	0V	8	SPEAKER	8	TONE REMOTE AUX 3	8	TONE REMOTE ALARM 3	8	0V
9	RX INHIBIT	9	13.8V	9	RX INHIBIT	9	13.8V	9	TEST POINT	9	REV PWR ALARM	9	13.8V
10	TX CTCSS DISABLE	10	13.8V	10	RX CTCSS DISABLE	10	13.8V	10	RX CTCSS DISABLE	10	13.8V	10	13.8V
11	CHANNEL SELECT 8	11	TX OPTO KEY +	11	CHANNEL SELECT 8	11	RX MUTE	11	CHANNEL SELECT 8	11	RX MUTE	11	13.8V
12	SERIAL COMM	12	TX OPTO KEY -	12	SERIAL COMM	12	RX RELAY COMMON	12	SERIAL COMM	12	FWD PWR ALARM	12	TX ENABLE
13	TX AUX 0	13	TX KEY	13	RX AUX 0	13	RX RELAY NORMALLY OPEN	13	TONE REMOTE AUX 0	13	TX KEY	13	0V
14	TX AUX 1	14	0V	14	RX AUX 1	14	0V	14	TONE REMOTE AUX 1	14	TONE REMOTE ALARM 0	14	0V
15	TX AUX 2	15	0V	15	RX AUX 2	15	0V	15	TONE REMOTE AUX 2	15	0V	15	0V

SW 2		LN6	
PIN	FUNCTION	PIN	FUNCTION
1	RX AUDIO OUTPUT	1	CTCSS DIS
2	TX LINE 1	2	TX CTCSS DISABLE
3	TX LINE 4		
4	RX MUTE		
5	TX KEY		
6		1	SERIAL COMM
7		2	RX AUDIO 2
8			
CN1 RELAY		LN8	
PIN	FUNCTION	PIN	FUNCTION
1	13.8V	1	TX ENABLE
2	TX KEY	2	TX AUX 2
CN2 FAN		LN9	
PIN	FUNCTION	PIN	FUNCTION
1	13.8V	1	TX KEY
2	CN 2 DRIVE	2	RX INHIBIT
CN3		LN10	
PIN	FUNCTION	PIN	FUNCTION
1	SERIAL COMM	2	CN 2 DRIVE
2	0V	3	0V



ISSUE	AMENDMENT	DRAWN	CHECKED	DATE
3				
2				
1	Original	AMM	CQ	5/6/01

FILE: \t800-54-0000(06) pins.vsd

TITLE: PIN FUNCTIONS OF BACKPLANE (220 - 01449 - 06) TONE REMOTE  
DRAWING: T800-54-0000pins Drawing IPN: 300-01449-03